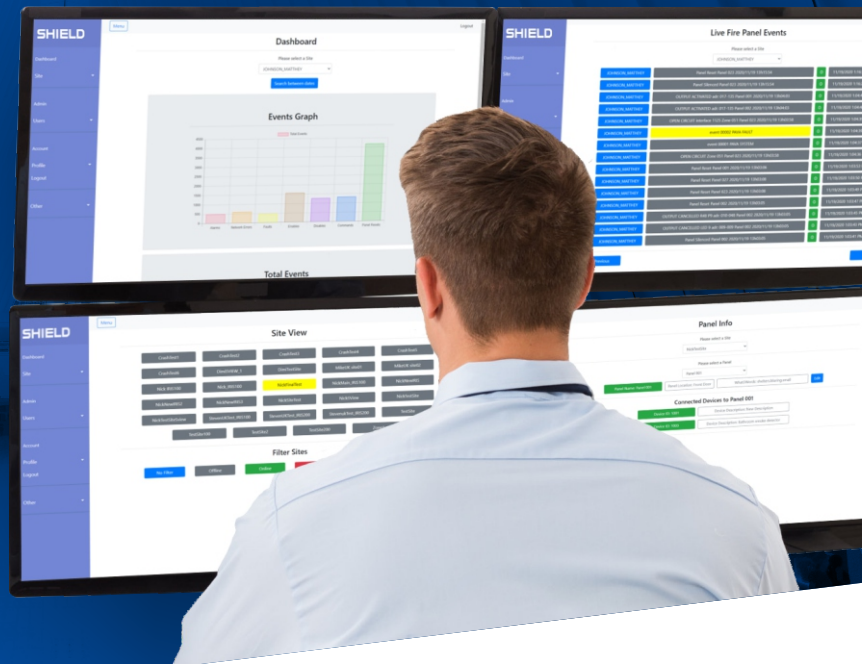


CEVIEW

Centralised View of Distributed
Fire Alarm Systems and BMS



ICNS is a communication engineering company that develops innovative products for the life-safety industry and BMS (Building Management Systems).

The ICNS CEVIEW Application monitors events that occur remotely. Users can generate real time incident reports and bespoke reports for the purpose of maintenance and audit.

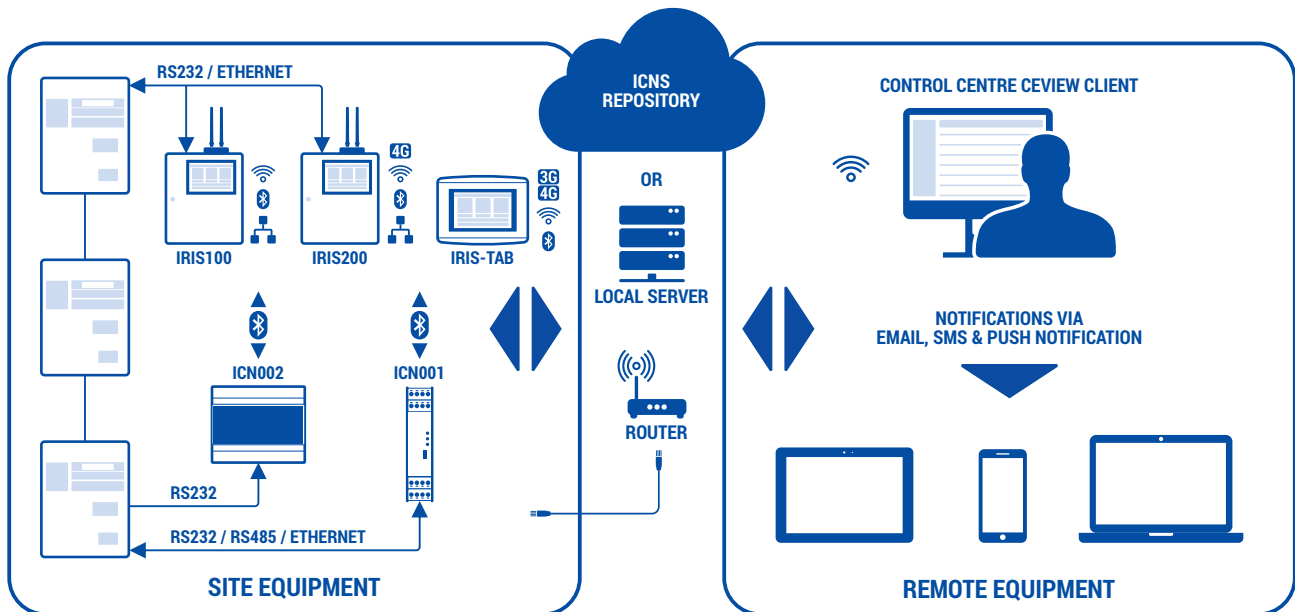
Control Room Application

- Event Monitoring:** All events occurring on the fire panel are displayed on the Live Event view and can be downloaded as a report for a specific time period.
- Fault Reporting:** The web application displays if a site is experiencing a fault and any network errors.
- Live Monitoring:** The web application is connected to a database and is being constantly updated from the fire panel for a live view.

FEATURES

- Remote monitoring. User can see all live events such as Fires, Faults, I/O and Network Errors
- Incident report generation
- Live event data, straight from the installed fire panel
- Tailored reporting for maintenance and auditive purposes

Redundant Event Report Delivery via Smartphone App, Email & SMS



System Features



DASHBOARD

Centralised control room dashboard for live event monitoring



NOTIFICATIONS

Live remote event notification via smartphone app, email and sms



ARCHIVES

Event archive retrieval for maintenance planning



EVENT LOGGING

Secure and redundant event logging at remote locations

Advantages of use with Fire Alarm Systems

- Remotely access the status of an installation prior to visiting the site
- Generate weekly/monthly/yearly reports detailing system performance
- Review maintenance requirements prior to visiting the site
- Live remote monitoring of weekly Fire System Bell Tests
- Remotely identify unstable FAP networks
- Remotely view detailed information about the activation of a loop device
- Receive Fire Alarm Panel (FAP) event notifications via secure email or SMS
- Receive FAP event notifications via smartphone App
- Remotely monitor FAP power supply and battery failures
- External I/O interface status monitoring